

Cruise Belfast

visit
Belfast

Belfast
Harbour

Belfast

Belfast is a city with a unique character and history that sets it apart from other cruise destinations. Since the first cruise ship arrival in 1996, Belfast has seen unprecedented growth in both cruise calls and visitor numbers. We combine our heritage with a legendary welcome and a sense of humour, which ensures cruise visitors enjoy their stay with us, but don't just take our word for it, read what the world's travel experts are saying!



Cruise Critic® has named Belfast as one of Europe's most popular cruise destinations in the Cruisers' Choice Destination Awards, 2018.



Belfast and Causeway Coast named number one region to visit in the world in 2018 by Lonely Planet.



Belfast named Rising Star destination by National Geographic Traveller magazine, 2018.



An award winning cruise destination, Belfast is now widely regarded as one of the UK and Ireland's most vibrant and exciting city destinations, full of unique visitor attractions and friendly faces. There is so much for visitors to explore in the incredible city whose innovation, passion and pride gave birth to RMS Titanic and many other great ships. From castles towering high above the lough to tranquil canal towpaths by beautiful parks, Belfast has a myriad of wonderful experiences to enthral visitors.

Just 60 minutes away, explore the rugged coast lines, historic castles and breath-taking scenery featured in the popular medieval fantasy series Game of Thrones or find themselves at the eighth wonder of the world, the spectacular Giant's Causeway.

Belfast's literary heritage includes the childhood haunts of Narnia's creator CS Lewis, while visitors can follow in the footsteps of St Patrick to trace a Christian heritage that incorporates beautiful cathedrals and sailors' churches.

A fabulous entertainment scene features world class musical acts in great arenas and concert halls, scintillating traditional music in intimate pubs, pulsating drama in state-of-the-art theatres and a buzzing arts scene throughout the city. You can add to that atmospheric traditional pubs, restaurants famous for quality and value and some of the best shopping in the UK or Ireland.



*Northern Ireland named as
Best Food Destination for 2018
at International Travel &
Tourism Awards.*



*Titanic Belfast named
World's Leading Tourist
Attraction at World Travel
Awards 2016.*

TITANIC CITY

Alongside the Titanic and Olympic slipways and the impressive Edwardian Dock and Pumphouse, sit high-tech developments including the Titanic Exhibition Centre, Public Records Office of Northern Ireland, and the internationally acclaimed Titanic Studios, home to the Game of Thrones film set.

TITANIC BELFAST

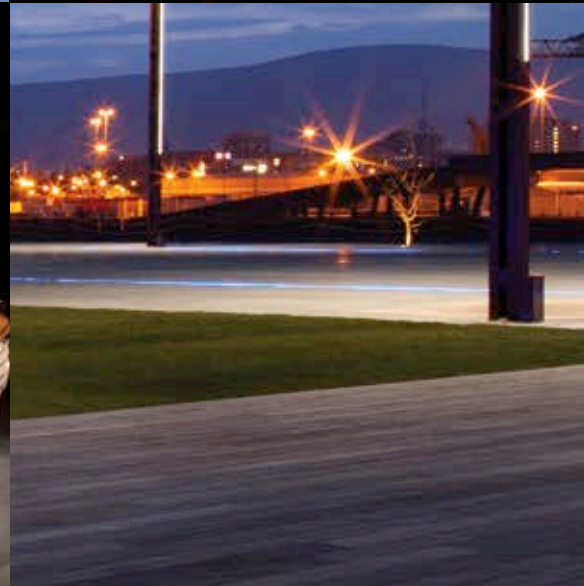
The jewel in the Quarter's crown, however, is Titanic Belfast, which has welcomed over five million visitors from over 145 countries since it opened in 2012. Voted World's Leading Tourist Attraction in 2016, this architectural triumph houses the world's largest Titanic visitor experience, featuring nine interpretive and interactive galleries that explore the sights, sounds, smells and stories of Titanic, as well as the city and people who made her.



Step back in time and learn about the thriving industries and exciting design innovations that led to the creation of RMS Titanic. Pass through the original Harland & Wolff gates to continue the journey to the shipyard and take the dark ride that uses special effects, animations and full-scale reconstructions to recreate the reality of shipbuilding in the early 1900s.

Then it's all aboard to experience an eclectic range of exhibits, models, interactive databases and elaborate computer generated imagery which illustrate the ship's opulent fit-out. This includes exact replicas of the cabins, and a 3D virtual experience that journeys through the dining areas, the ship's engine rooms, and deck promenade, where you can see and hear the ocean and feel the engines rumbling.

Pay tribute to the loss of this magnificent ship and the 1,500 men, women and children who lost their lives on her tragic maiden voyage, experience the aftermath, the inquiries and the sensational news reports of the time. The story is then brought up to the present day with the discovery of the wreck and into the future with live links to contemporary undersea exploration.



MARITIME CITY

HMS CAROLINE

Based in Belfast's famous Titanic Quarter, HMS Caroline is the last remaining Royal Navy battleship from the First World War, now restored as a must-see floating museum with an amazing story to tell. Be immersed in life aboard this unique ship – lone survivor of history's greatest naval engagement... the Battle of Jutland!

Enjoy the new Dockside Museum, a space dedicated to telling the personal stories of the crew along with HMS Caroline's colourful history in Belfast – her home for over 90 years! Then step aboard the 'Carry', see the powerful drama of Jutland unfold and experience what life was like for the crew over 100 years ago. Soak up the atmosphere as you find out about communication at sea in the Signal School, and continue to the Torpedo School before finishing your visit at the authentic galley café. Finally, relax at the new picnic area or let your little mariners loose on the naval-themed kiddies' play park as you take in the panoramic views of Belfast harbour.





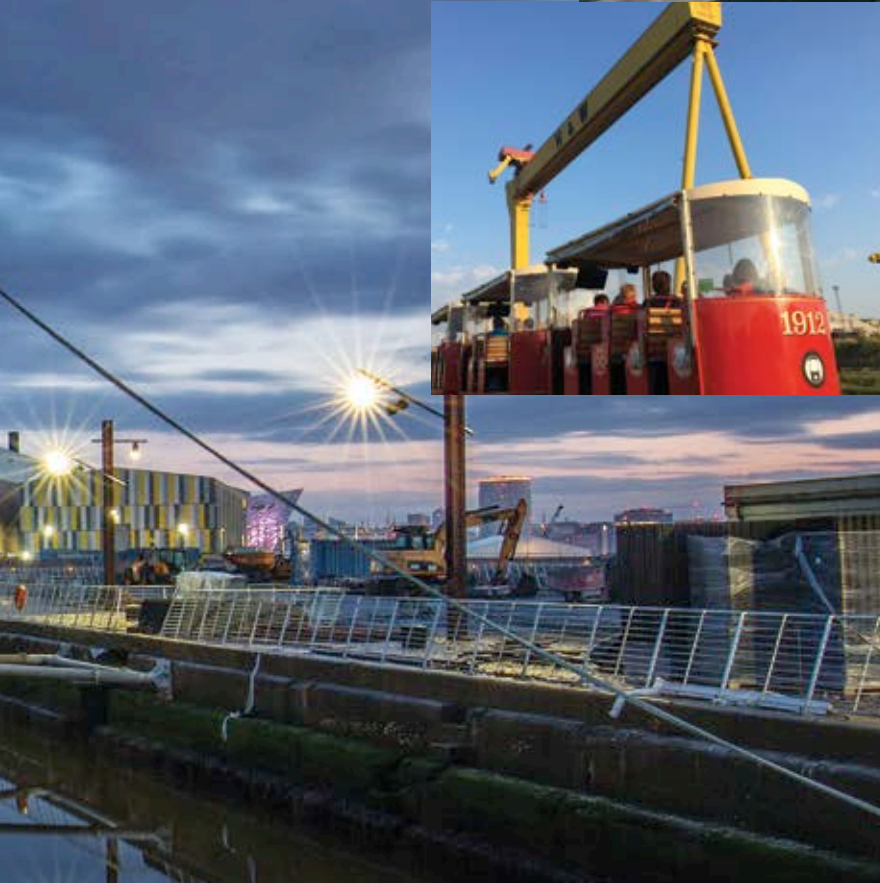
SS Nomadic

Explore the restored last remaining White Star Line vessel and the biggest Titanic artefact in the world. Built by Harland and Wolff in 1911, SS Nomadic served as the tender ship for Titanic on her maiden voyage, carrying first and second class passengers from the port of Cherbourg to the ship. The vessel also served in World Wars I and II, as well as luxury liners Queen Mary and the Queen Elizabeth.



Wee Tram Tours

The Wee Tram is a fun way to see all the sights of Titanic's historic shipyard. Travelling in carriages based on the funky red-and-cream tram cars that operated in the shipyard in Titanic's day, passengers get a full guided tour around the docks, and also get up close and personal to the modern shipyard.



The Great Light

Originally serving both Mew and Tory Island lighthouses, the Great Light is a new feature on the Titanic Walkway linking the Titanic Slipways with HMS Caroline. The optic is the largest of its kind ever constructed and dates back to 1887. It is lit all year round and has amazing views over Belfast Harbour and Lough.



CRUMLIN ROAD GAOL

The Gaol dates back to 1845 and closed its doors as a working prison in 1996. Uncover 150 years of history with a guided tour of Belfast's most infamous prison.

Built between 1843 and 1845, the County Gaol for Antrim was designed by the renowned architect Charles Lanyon. The black basalt rock prison was modelled on London's Pentonville Prison. Take a tour of this nineteenth century Grade A listed building and experience life behind bars. During its time in service thousands of people were imprisoned, 17 people were executed, numerous escapes were undertaken and many infamous inmates were detained.

Learn how women and children were held within its walls and of the political segregation of republican and loyalist prisoners. A qualified guide takes visitors through the key areas of the prison including the Governor's Office, the holding cells, execution cell, the graveyard and the underground tunnel linking the Gaol with the Crumlin Road Courthouse.



QUEEN'S UNIVERSITY BELFAST

Queen's University is the UK's ninth oldest university with a distinguished heritage and history.

Its main building, the Lanyon Building, was designed by architect, Sir Charles Lanyon, and opened in 1849. The image of the Lanyon Building is used on tourist literature and on bank notes, and is one of the most recognisable symbols of the city of Belfast and Northern Ireland. Today, Queen's is one of the leading universities in the UK and Ireland, providing world-class education underpinned by world-class research. Exploring the Queen's Quarter is an essential part of a visit to Belfast. With over 100 buildings of special architectural and historic merit.

Everyone is welcome to visit the open campus. Guided tours of the University, including the Great Hall, Canada Room, the Council Chamber and the quadrangle are available throughout the year.



HISTORY & HERITAGE

Ulster Museum

Northern Ireland's treasure house of past and present, the Ulster Museum tells the story of the people of the north of Ireland from earliest times to the present day and is home to a rich collection of art, history and natural sciences. Impressive galleries and interactive discovery zones offers something for everyone, from the simply curious to the enthusiast.

The history galleries trace the development of life and culture in Ireland in engaging and stimulating ways. Visitors can gaze upon the fabulous treasure from the Spanish galleon, Girona, the best Armada collection to be seen anywhere outside of Spain. For those interested in Northern Ireland's recent history, it is sensitively explored in the widely acclaimed Troubles and Beyond gallery. The science galleries are a 'must-see' for anyone with an interest in the amazing diversity of the natural environment. The Ulster Museum's art collection contains one of the finest collections of Irish art to be found anywhere in the world.

A photograph of an ancient Egyptian mummy lying in a wooden sarcophagus. The mummy is wrapped in dark cloth with colorful hieroglyphs and symbols. The head is visible, showing a painted face with a headdress. The sarcophagus is made of dark wood and is displayed in a museum setting. The text "CULTURE VULTURES" is overlaid in large yellow letters.

CULTURE VULTURES

Mummy case

Tjemutjesut had been buried in the 18th century, which indicates that his mummy is dated to the 18th century.

The right mummy case was made of wood, which was painted with hieroglyphs and symbols. The mummy case is made of wood and is painted with hieroglyphs and symbols.

The mummy case is made of wood and is painted with hieroglyphs and symbols.

The mummy case is made of wood and is painted with hieroglyphs and symbols.

When Tjemutjesut was buried, the body had been wrapped in linen.



ULSTER FOLK MUSEUM

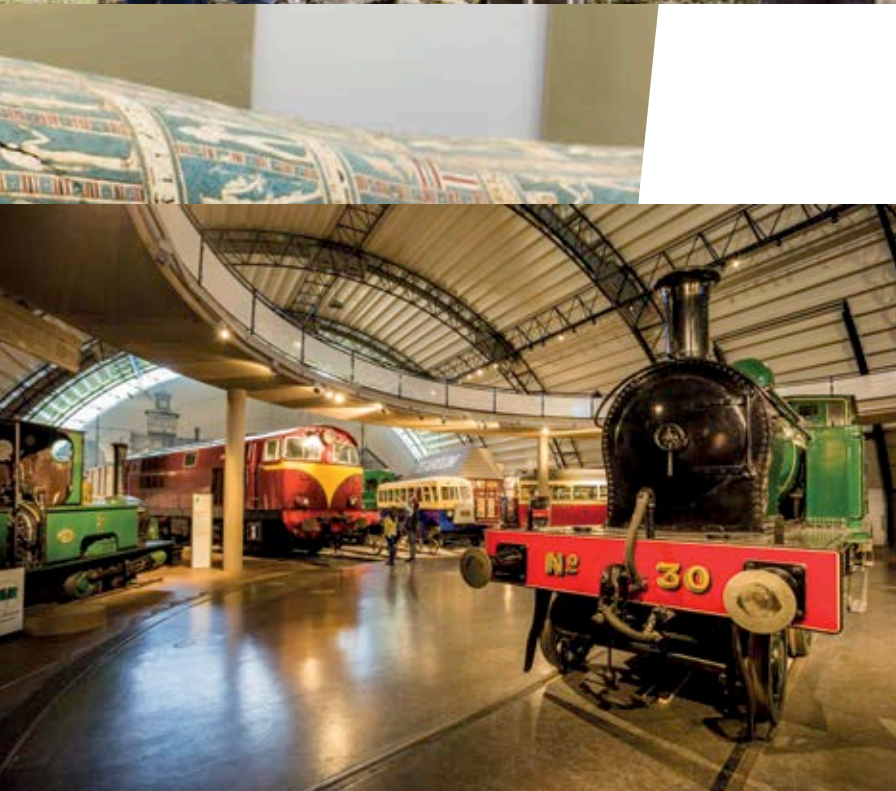
Set in over 170 acres of rolling landscape overlooking Belfast Lough, stroll through the past and discover how people lived over 100 years ago.

Leave the hustle and bustle behind and be transported to a bygone era in a place of century-old thatched cottages, farms, schools and shops as you wander the cobbled streets of Ballycultra town or the picturesque country walks around the rural tranquillity of the Ulster Folk Museum. There's a working farm as well with a variety of animals that would have been found in the Ulster countryside of the 1900's. Chat to costumed guides as they demonstrate traditional crafts such as basket weaving, blacksmithing, tweed weaving and open-hearth baking and taste some traditional soda bread straight off the griddle.

ULSTER TRANSPORT MUSEUM

The Ulster Transport Museum creatively displays one of Europe's largest and most comprehensive transport collections, from horse drawn carriages to Irish built motor cars and from the mighty steam locomotives that graced Irish railways to the history of ship and aircraft building.

Experience marvels of engineering, old and new, as you discover the changing face of transport through the ages, from electric trams, motorbikes, fire engines and vintage cars including the beloved DeLorean car. Well worth a visit is the Titanica exhibition which draws on National Museums NI's collections and features original artefacts exploring Titanic and her world, drawing on Belfast's strong industrial and maritime history. Discover life on board through fascinating objects and personal stories that explore the tragic loss of Titanic in 1912.



HILLSBOROUGH CASTLE & GARDENS

Walk in the footsteps of peacemakers and presidents through the newly restored Hillsborough Castle and Gardens, Northern Ireland's only royal residence.

The official residence of the Royal Family in Northern Ireland since the 1920s, Hillsborough Castle has recently had more than £16m invested by Historic Royal Palaces in an ambitious program to conserve and re-present the heritage and invite visitors to explore its many stories.

From grand family home to charming royal residence, Hillsborough Castle has welcomed the world and witnessed pivotal chapters in politics. This splendid late Georgian house, is set in 100 acres of breath-taking gardens and offers significant contrasts of woodland, waterways, gardens with trimmed lawns and meadows as well as specimen trees and rare plants.



NEW ATTRACTIONS



JAMES CONNOLLY VISITOR CENTRE

Located in the heart of the Gaeltacht Quarter, only yards from where Connolly lived on the Falls Road, Áras Uí Chonghaile (James Connolly Visitor Centre) is an inspirational new attraction.

It tells the story of Connolly from his birth in Edinburgh in 1868 to Irish parents, through to his death in Dublin in 1916. Exploring his role as a pioneer of the early trade union movement, and his extraordinary travels throughout Britain and America, visitors will be introduced to a man of remarkable ideas and writings, with a vision of Ireland as a socialist republic.

James Connolly also had significant influence in the Easter Rising of 1916, a six day rebellion against the British government in Ireland. Learn of his key role in the Easter Rising, his subsequent court-martial, death sentence and execution. The centre offers a thought provoking insight into his life, his politics and the impact he had on the history of the island of Ireland.

COMING SOON!

A new £100m world-class visitor attraction telling the Belfast Story is coming to Belfast City Centre. This unique international attraction will invite visitors to explore the many stories of the city and its people through an immersive, multi-gallery experience. The galleries will draw on the full range of interpretive techniques, using a combination of multi-media technologies and selected objects to reveal histories, personal secrets and fascinating facts about Belfast.

GIANT'S CAUSEWAY



A UNESCO World Heritage site, the Giant's Causeway is a magnificent, mysterious geological formation on the North East coast of County Antrim. The Giant's Causeway is steeped in myths and legend.

VISITOR TIP

It is recommended that you book your visit to Giant's Causeway in advance to avoid disappointment as spaces book up quickly during the busy summer period.

The setting is a spectacular, dynamic coastal landscape of Atlantic waves, rugged cliffs, fascinating geographical antiquity, secluded bays and magnificent views. It forms a jagged headland of neatly packed columns which point towards Scotland. Visitors can walk along the basalt columns which are at the edge of the sea, just over 1km from the entrance to the site.

They say the Giant's Causeway was the stomping ground of giant, Finn McCool, who lived in these parts nearly two thousand years ago. How else can you explain the chimney stacks that mark his house? The organ he built for his musical son Oisín? Or the giant boot he left on the shore?

Discover the story for yourself. This extraordinary UNESCO World Heritage site has been enhanced by a £19 million state-of-the-art interactive visitor centre where the science and stories about this geological phenomenon come to life.

Don't miss

- Beautiful coastal path which extends eleven miles to Carrick-a-Rede Rope Bridge
- Geology, flora and fauna of international importance
- Runkerry Head which provides a spectacular two-mile walk
- Some of Europe's finest cliff scenery, with fantastic birdwatching



HOME OF THRONES

HBO's Game of Thrones® is one of the most popular and successful fantasy TV series ever made and it is filmed right here in Northern Ireland!

Part of the show's appeal (and what has made it so popular with millions of fans) are the mesmerising fantasy lands of Westeros which have been brought to life using Northern Ireland's rugged coastlines, historic castles and breathtaking countryside and forests. Fans can easily visit many of the locations where a favourite scene was filmed or walk in the footsteps of a much-loved character.

There are a number of guided coach tours that depart from Belfast. Meet Winterfell's Master-at-Arms, dress up in character costumes, take a helicopter tour of key locations with a guide who worked as a stand in for Hodor, and enjoy the thrill of firing live arrows at White Walkers. You can even meet two of the Starks' actual Direwolves!



These tours are independently operated. They are not sponsored, endorsed, or affiliated with HBO or anyone associated with 'Game of Thrones'.

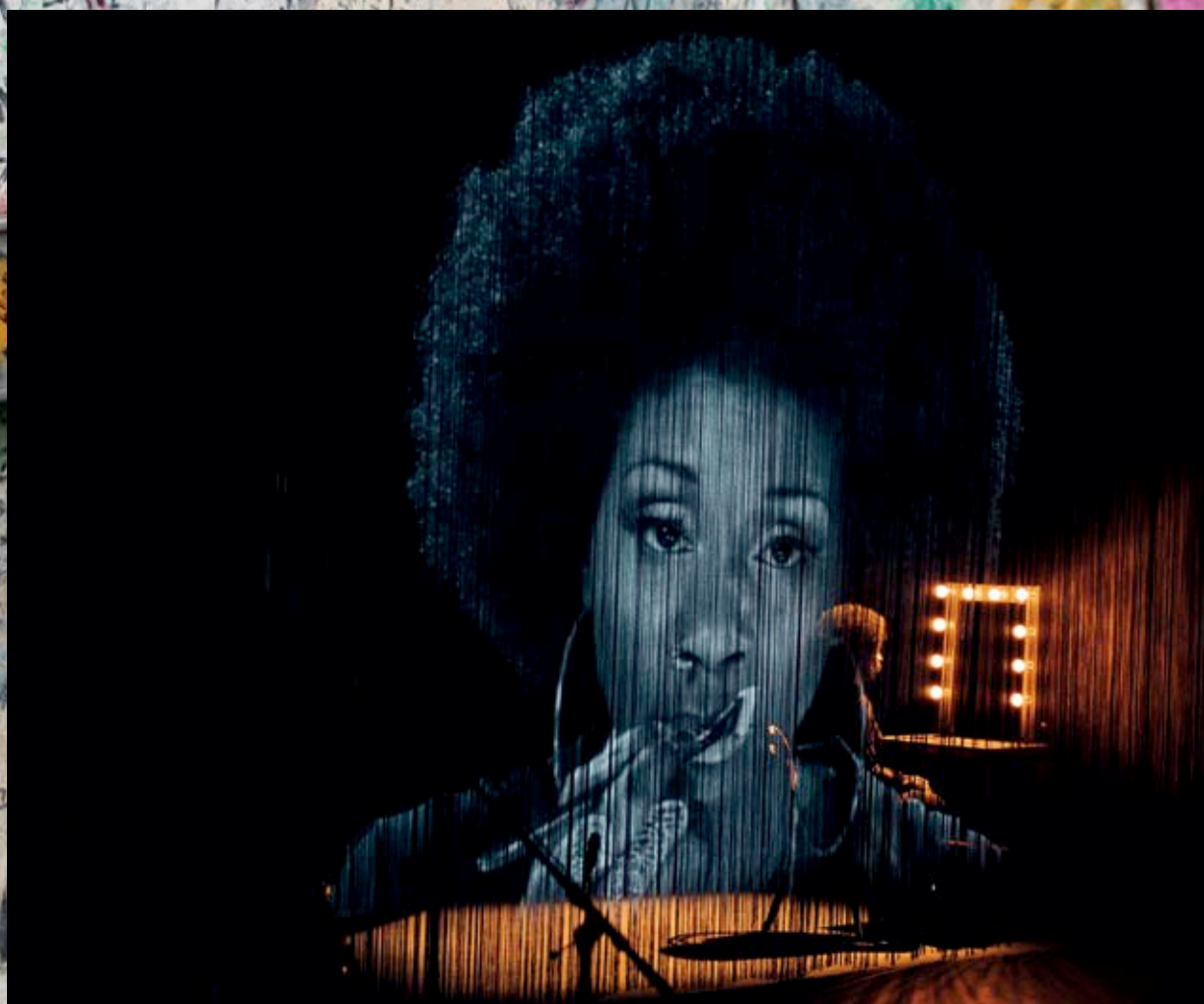
GAME OF THRONES® LEGACY EXPERIENCES

As Game of Thrones® finishes filming after a decade in Northern Ireland, HBO plans to celebrate the show's incredible legacy by converting several filming locations into visitor attractions.

Plans are underway to include the standing sets for iconic locations such as Winterfell, Castle Black, and Kings Landing, alongside a formal studio tour of Linen Mill Studios in Banbridge which will showcase a wide array of subject matter from the series spanning all seasons and settings. The attractions will offer fans the first opportunity to set foot inside some of the most iconic locations from the series to see how the world's biggest TV show was made. Each site will feature not only the breathtaking sets, but will also exhibit displays of costumes, props, weapons, set decorations, art files, models, and other production materials. The visitor experience will be enhanced by state-of-the-art digital content and interactive materials which will showcase some of the digital wizardry the series is known for.



ARTS & CULTURE



Belfast may be small in size, but it's huge in imagination! Explore some of the cool art spaces and creative places just waiting to be discovered.

The Murals & Public Art

Described as "the world's greatest open-air gallery", the murals in East and West Belfast are a must-see experience for visitors. Artworks range from Republican and Loyalist political statements to colourful celebrations of the city's famous sons and daughters. Check out the stunning street art scattered throughout the Cathedral Quarter and there are over 150 pieces of public art placed around the city to choose from. Pieces worth finding include: 'the Big Fish' on Donegall Quay, 'the Beacon of Hope' towering over the River Lagan, and Belfast's largest sculpture 'Rise' can be seen at the Broadway roundabout.

Performing Arts

Check out fantastic touring west end productions at the historic Grand Opera House (1895), enjoy the tranquil river views as well as superb local productions at the stunning Lyric Theatre in the Queen's Quarter or enjoy a mixed programme of theatre, music, dance and visual art at the MAC in the Cathedral Quarter. The Ulster Hall (1862) in the Linen Quarter is home to the Ulster Orchestra as well as offering a programme full of all genres of music and comedy. The Waterfront Hall has stunning views

and provides a fantastic programme offering concerts, comedy, theatre, ballet, dance and much more. In the Gaeltacht Quarter, Cultúrlann McAdam Ó Fiaich is an Irish language arts and cultural centre where you can experience traditional music, poetry readings, céilís, workshops and a children's arts programme.

Galleries

Belfast has an impressive array of gallery space, displaying everything from the most contemporary visual art in the Golden Thread Gallery to traditional printmaking techniques showcased in the Belfast Print Workshop. The Naughton Gallery at Queen's features a rolling programme of works from the University's own collection, touring exhibitions and shows by local and international artists.

Literary Scene

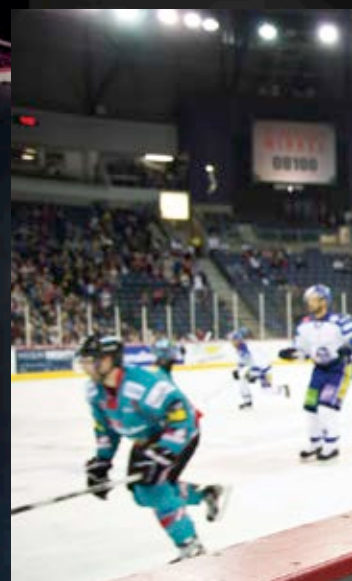
The Linen Hall Library is the oldest library in Belfast and the last subscribing library in Ireland, renowned for its unparalleled Irish and Local Studies Collection. Northern Ireland's Nobel Prizewinning poet, Seamus Heaney, is celebrated with an exhibition space and programme of literary events at HomePlace in Bellaghy.





SPORT

Watching and playing sports is an important part of culture in Belfast. The city has several notable teams playing a diverse variety of sports that are worth getting a ticket for, or take part to create your own action packed break.





Rugby

Ulster Rugby competes in the Guinness PRO14 and the Heineken Champions Cup with home games played regularly at the Kingspan Stadium. The season kicks off in September and runs through to April. There's always a cracking atmosphere and plenty of action to follow.

Ice Hockey

Belfast Giants home games take place most weekends at The SSE Arena from August until April. The season promises plenty of fast and furious action that will have you on the edge of your seat, from bone-crunching hits to last minute game-winning goals.

Football

The Northern Ireland international team will be competing to qualify for Euro 2020 with games commencing in March 2019. The Danske Bank Premiership has weekly league matches taking place throughout Northern Ireland.

Gaelic Games

Gaelic Football, Hurling and Camogie are fast-paced action sports. The season runs from February until October with the All-Ireland finals taking place in Dublin's Croke Park.

IFA EDUCATION & HERITAGE CENTRE

The National Football Stadium at Windsor Park is home to a unique stadium tour that tells the story of Northern Ireland football through a variety of media, interactive displays and key artefacts from 1880's to the present day.

Visitors will be able to relive the atmosphere of famous matches, gain insights into the drama on and off the pitch and feel the rush of emotions shared by everyone in the stadium – win, lose or draw.

Northern Ireland have achieved so much on the global stage and the centre covers it all. The story starts at humble beginnings in 1880, weaving its way through three appearances in world cup finals to the country's first appearance at a European Championship finals in France in the summer of 2016. The centre will allow fans to relive their favourite moments following Northern Ireland, whether it was the famous win over England in 2005, that goal in Spain in 1982 or Gareth McAuley's header against Ukraine in Lyon.



FAMILY FUN

Belfast is a great holiday destination with plenty of attractions for the young, and not so young, in the city and beyond.

Go wild at Belfast Zoo with spectacular wildlife, fun feeding times and trails to follow with panoramic views across Belfast. If prehistoric beasts are of more interest, explore the Ulster Museum with its interactive learning zones full of great activities to keep the kids happy. The Odyssey Pavilion provides some wet weather respite with a whole host of entertainment under one roof – here you will find bowling lanes, cinemas, family friendly restaurants and Ireland's award winning science and discovery centre, W5. Nearby you can also learn about the city's maritime heritage at SS Nomadic, HMS Caroline and Titanic Belfast, which are all family-friendly. For something more active choose from indoor skiing or the Inflata Park Action Course at We Are Vertigo, get your skates on at Dundonald Ice Bowl, scale the walls at Clip 'n Climb or test your adventure golf skills at The Lost City.



TAKE A TOUR

You may already know what you want to see and do during your trip to Belfast: from the political wall murals to the Giant's Causeway, the history of the Titanic to Game of Thrones film locations. You'll find a variety of ways to explore more of Belfast.



City Tours

To get a general overview of everything the city has to offer, book a private guided taxi tour or open top bus tour. It's the ideal way to find out all about the city's history including visiting the famous political wall murals, the Peace Wall and other highlights in the Gaeltacht, Queens, Cathedral and Titanic Quarters.

Titanic Tours

No trip to Belfast is complete without visiting Titanic Belfast, but there are also a range of tours on offer to discover this historic area. Take a Titanic Boat Tour and learn about the changing face of Belfast's harbour. Follow in the shipbuilders footsteps on a Titanic Walking Tour, or hop on the 'Wee Tram' to zip around all the key sites!

Food Tours

Northern Ireland was awarded the Best Food Destination at the

International Travel & Tourism Awards, so why not take a tour to sample some culinary delights! Enjoy a fun and food filled guided walk to some of the top food and drink hot spots around the city or take a trip to learn about the complex distilling process of our award winning whiskey's and artisan gins or the brewing techniques of our local craft beers and ciders.

Bike Tours

Take a bike tour around Belfast and discover a range of attractions and interesting points along the way, or create your own itinerary and hire a Belfast Bike from one of 40 docking stations located across the city centre. For a more social experience, take a 'Wee Toast Tour'. This 15 seater vehicle lets you take in the sights and sounds of the city as you pedal together from the comfort of your bar stool.



Food reviewers have plated up praise for Belfast's food scene and there's nothing like exploring a city, its restaurants and new culinary experiences to make mouth-watering memories. Belfast offers everything from Michelin star dining to the classic 'Ulster Fry' and the best fish and chips around, so you won't leave disappointed!

FOOD & DRINK

Dining Out

Belfast is home to some of the most talented chefs in the world. The much coveted Michelin Starred 'Eipic' and 'Ox' have put Belfast on the culinary map, and the finest in local cuisine can also be found at renowned establishments including James Street, The Muddlers Club and The Great Room Restaurant to name but a few. Great chefs, superb local produce and great value means Belfast has one of the tastiest food scenes in the UK or Ireland.

Markets and More

Belfast really is a foodies delight. At the weekend, St George's Market oozes Victorian charm with some of the finest fresh produce, street food as well as local arts and crafts. Explore amazing delis such as Sawers and Avoca, with their extensive range of high quality local artisan products, and those with a sweet tooth shouldn't miss Co Couture where you can buy locally made award-winning chocolates.

Ginaissance

Belfast is experiencing something of a 'Ginaissance' with many bars and restaurants across the city offering an entire menu dedicated to this increasingly varied spirit. While you're here, make sure to try the best in our local craft distilled gin. 'Jawbox' is perfect served with ginger ale, mint leaves and a wedge of lime, or 'Shortcross' served with frozen orange ice cubes, fresh mint and elderflower tonic water. You can also take a day trip out of the city to tour these award winning distilleries or even make your very own creation at the Hughes Craft Distillery Gin & Spirit School.





SHOPPING

With a huge variety of independent retailers, high street names, boutiques, speciality shops and traditional markets, you'll find it here in Belfast.

Find everything you could possibly need under one roof at either Victoria Square or Castle Court; find all the high street names you can think of along Donegall Place and Royal Avenue or hunt out the city's unique craft shops, vintage stores, independent record shops and second hand books retailers. For chic designer boutiques and private art galleries, interspersed with delis, wine bars and cafés, you can make a day of it on the Lisburn Road.



VISITOR TIP

If you're in the city at the weekend, don't miss the chance to browse stalls full of the finest fresh produce, local arts and crafts and delicious hot food at the charming Victorian St George's Market, which is open every Friday, Saturday and Sunday.

Northern Ireland is famous for the beauty and variety of its unspoilt scenery and nowhere is more than two hours or so from Belfast.

Within an hour's drive of Belfast, discover pristine seafronts, country parks, rugged hill tops or enjoy a variety of country house experiences. To explore more, you can sail on the tranquil lakes of Fermanagh or walk through the most inspiring gardens in the National Trust's ownership at Mount Stewart, on the stunning Ards Peninsula. Choose between tracing powerful Irish myths to their source

around the mystic mountain of Slieve Gullion in South Armagh, discover 'Saint Patrick's country' through Armagh and County Down or circle the walls of Ireland's only completely walled city, Derry~Londonderry and still be back in time for dinner! For a more unusual adventure, experience The Gobbins, a challenging, dramatic, two-mile-long cliff-face path involving spectacular tubular and suspension bridges, caves and tunnels carved through the rock. The Gobbins excites all the senses and is another jewel on the famous Causeway Coastal Route, voted one of the world's top road trips.

LANDSCAPES & SCENERY





GOLF

In geographic terms, Northern Ireland is not a huge country, but when it comes to golf, we're a giant. With over 90 courses, from gentle links to the most challenging championship courses, however good your game, we've got you covered.

What better way for visitors to relax and unwind than by teeing off at Royal Belfast, Ireland's oldest golf club, by the banks of Belfast Lough. Or play a round in acres of sublime parkland just minutes from the harbour, before enjoying the warmth and hospitality on offer in many of the local pubs and restaurants. In all, Belfast boasts 14 excellent golf courses and golf centres and if that isn't enough, there are world famous links courses within an hour's drive or so, including Royal County Down and Royal Portrush, home of The 148th Open in July 2019.



SERVICES

Cruise Belfast is a marketing initiative formed between Belfast Harbour and Visit Belfast which markets Belfast internationally as a leading destination for cruise ships visiting Northern Europe in the summer. Through the initiative at Cruise Belfast, cruise lines, excursions companies and shipping agents have a dedicated team to support them when they visit Belfast. The Cruise Belfast team are committed to improving the visitor experience for cruise guests and implementing changes when necessary to ensure Belfast retains its position as one of the most popular cruise destinations in Europe.

More information on all the services available, as well as a huge range of sample itineraries can be found at www.cruise-belfast.co.uk

**visit
Belfast**

Visit Belfast Cruise Team

[cruise@
visitbelfast.com](mailto:cruise@visitbelfast.com)

**Belfast
Harbour**

**Tony McAuley
Associate Director Cruise Services**

[t.mcauley@
belfast-harbour.co.uk](mailto:t.mcauley@belfast-harbour.co.uk)

BELFAST HARBOUR



Steeped in history

The Port of Belfast can trace its origins back to 1613 and emerged as the most important port in Ulster in the early eighteenth century. In April 1912 it was also the location from which the RMS Titanic sailed, the world's largest and most luxurious ship at that point.

Belfast Harbour is Northern Ireland's largest port, handling 70% of the region's seaborne trade. This includes 80% of Northern Ireland's oil and petroleum imports and 1.5 million ferry passengers each year. Belfast Harbour is the largest cruise port in Northern Ireland with over 250,000 visitors each year. The Harbour Estate covers an area of 2,000 acres, representing 20% of the Belfast city area. Belfast Harbour has the longest deep-water quay in Ireland at 1 kilometre in length with a draught of 10.2 metres.

Since its formation, Belfast Harbour has developed and improved the Port, reclaiming land to accommodate new quays, developing new trades and adapting to changes in shipping and cargo handling technology giving us the efficient, modern facility that we have today. Belfast Harbour is linked directly to the M2 motorway, which leads north towards one of the world's most scenic drives along the Causeway Coast and Glens and onto the historic City of Derry, County Londonderry; south to St. Patrick's Country in Counties Down and Armagh; or west to the beautiful Fermanagh Lakelands.

CRUISE FACILITIES



Dedicated cruise facility

Belfast Harbour has announced the opening of a dedicated cruise facility at D1, Airport Road.

Building upon the significant increase in cruise calls in recent years, Belfast Harbour has committed to providing world class facilities dedicated for cruise ships. The new facility can accommodate all vessels currently operating in the UK and Ireland region as well as the next generation ships designed to carry over 6,000 passengers and crew.

A dedicated coach park and visitor information centre is being provided to cater for all the needs of cruise passengers and the shore excursion operations. The new facility benefits from being one of the most easily accessible berths on the island of Ireland. It is adjacent to the port's deepwater turning circle and located on the port's primary access route – Victoria Channel.

The location of the new cruise facility will also provide easy access by coach transfer to the city centre as well as providing an easy link to the motorway network to enable coaches to enjoy seamless transition time to popular shore excursion destinations outside the city.

DOCKSIDE WELCOME



New cruise welcome pavilion*

At D1, there is a new, inspirational, cruise welcome facility, staffed by Visit Belfast Travel Advisors. Offering a range of services including free tourist information and advice, information on tours and events, free Wi-Fi, a 9 screen video wall, self-service touch screens and a gift shop ensures that we can fully service cruise visitor needs.

Visit Belfast have a team of multi-lingual Travel Advisors who provide tourist information at the quayside and on board when required. Maps, brochures and discount vouchers are available as well as a daily events listing and shuttle bus timetable information.

Further information can be found at the Visit Belfast Welcome Centre, our flagship information centre, located across from Belfast City Hall. Opening hours are extended to accommodate the visit of a cruise ship. Cruise Belfast can also organise musical entertainment at the port either to welcome the ship to Belfast or to bid a fond farewell.

*This project is part financed by Tourism Northern Ireland under its Tourist Industry scheme.

BELFAST HARBOUR INFORMATION



D1

Deepwater berth

Maximum length: 450m

Maximum beam: n/a

Maximum draft: 11.2m

Stormont Wharf

Victoria Channel

Maximum length: 1,000 metres

Maximum beam: 33 metres

Maximum draught: 10.2 metres

Pollock

Herdman Channel

Maximum length: 250 metres

Maximum beam: n/a

Maximum draught: 8.5 metres

- Tugs: 24 hour availability, requirement depending on size and equipment
- Restrictions on arrival/departure times: Tidal only
- Range of Quay heights: 1.1 - 5.8 metres
- Difference between high and low tides: 3.1 metres
- ETA to whom: Belfast Harbour Radio
- ETA contents: ETA at No.1 Buoy, Last Port, Max draught, Masters Name
- Pilotage Compulsory: Yes
- Pilot VHF: 12
- Position of pilot pickup: "Fairways" Buoy
- Distance from Port: 6 miles
- Pilot Working Hours: 24 Hours
- Prevailing Currents: 2 kts
- Winds: Prevailing SW
- Is fresh water available: Yes
- Number of Hoses: 2
- Tonnes per hour guaranteed: 12 tonnes
- Type of fitting: 10 tonnes
- Garbage and sewage: 4"
- Security personnel: Reception facilities available
- Passengers/crew inspection: Yes
- Tour buses at quay: Yes
- Tourist desk: Yes
- Shuttle service: on quayside/ship
- Taxis: Yes, 10 minutes to city centre

USEFUL INFORMATION



Port location

Ships dock at D1, Stormont Dock or Pollock Dock, with each located less than 3 miles north or a ten minute drive from Belfast city centre.

Tourist Information

Visit Belfast Welcome Centre
9 Donegall Square North
Belfast BT1 5GB

+44 (0) 28 9024 6609
info@visitbelfast.com

October - May
Mon - Sat: 9am - 5.30pm
Sun: 11am - 4pm
June - September
Mon - Sat: 9am - 7pm
Sun: 11am - 4pm

Tourist information & advice
Tickets for tours & events
Accommodation bookings
Gift shop
Free Wi-Fi
Bureau de Change
Left luggage

Language

English

International Dialling Code

00 44 + area code (without 0) + local number

Climate

The weather in Northern Ireland is traditionally changeable but mild. Although the summer months sometimes see periods of sunshine, at any time of year it is advisable to be prepared for rain.

Currency and Banking:

British pound sterling (£). Larger stores accept Euro (€) notes and usually give change back in sterling. Automatic Teller Machines (ATMs) dispense cash at hundreds of locations and credit cards are widely accepted.

Smoking

A smoking ban has been implemented in all Northern Ireland's workplaces and enclosed public spaces, including pubs, cafés, shopping centres, restaurants, buses and trains.

Tipping

It is now a generally accepted practice in restaurants to leave a gratuity of 10-15% for good service. Some restaurants may add on an obligatory 10 or 12.5% service charge on large group bookings.

Disability Access

Belfast's buildings are more accessible to wheelchair users than ever. Shopmobility Belfast provides free wheelchairs and scooters to hire from CastleCourt and Victoria Square shopping centres and the Shopmobility office at 2 Queen Street, Belfast. For more details contact: +44 (0)28 9080 8090 or visit www.shopmobilitybelfast.co.uk



Belfast
City Centre

Pollock
Dock

Stormont
Wharf



D1

Titanic
Belfast





Cruise Belfast

cruise@visitbelfast.com
cruise-belfast.co.uk

**visit
Belfast**

**Belfast
Harbour**